

DATA PENCIL KIT

communication interface

Inductive communication interface
Remote equipment setup and data recovery



Data loggers

The Data Pencil communication kit enables to set up our data loggers and read data without connection thanks to a PC with the WinMemo software.

Several versions of the Data Pencil kit are available :

- Radio version for remote use
- Inductive version (use in contact with the data logger)
- Waterproof version (50m)
- 6000m version.

Handy, robust and compact, the Data Pencil has been designed for field.

nke
INSTRUMENTATION

www.nke-instrumentation.com





DATA PENCIL KIT

Data loggers communication kit



< Picture ACCOAST

The Data Pencil communication kit includes the Data Pencil and the Winmemo software.

The Data Pencil can be ordered alone as a replacement unit (delivered without the software).

The Data Pencil works with a Microsoft Windows run computer.

A Radio and an Inductive versions are available.

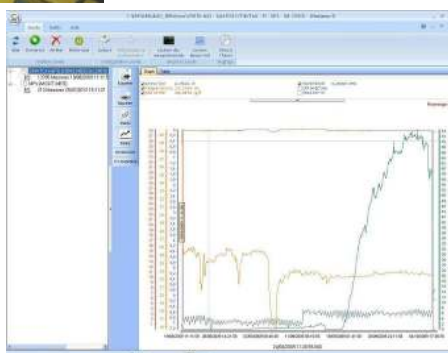
The Inductive Data Pencil is available as a 50m waterproof version (supplied with a 200m max. cable) or 6000m version (equipped with a SubConn connector output).

DESIGNATION	Inductive Data Pencil Kit	Waterproof Data Pencil Kit	Inductive Data Pencil kit 6000m	Radio Data Pencil Kit
Order code	60-07-316/403	60-07-188	60-07-157	60-07- 198/114
Waterproof	Splashproof	50m waterproof	6000m waterproof	Splashproof
Port	USB	RS422 + adaptor RS422/USB	RS232	USB
Data link	Inductive			Radio 868MHz
Range	<1cm (contact)			25m in the air*
Cable length	1m50	200m max.	/	1m50
Housing mechanical features	Ø 2cm Length 14,4cm Weight with cable 160g	Ø 2cm Length 14cm Weight with 50m cable 2kg	/ / /	Ø 2cm Length 18cm Weight with cable 100g



A CTH data logger installed on a corer being set-up with a Data Pencil

< Picture QDGK China



Winmemo software for data logger set up, data recovery and display >

nke
INSTRUMENTATION



Sales department
Tel : +33 (0)2 97 36 41 31 - Fax : +33 (0)2 97 36 55 17
info.instrumentation@nke.fr
www.nke-instrumentation.com

